

# The Beacon House



3,382  
SQ. FT.



1  
LEVEL



3  
BEDROOMS



4  
BATHS



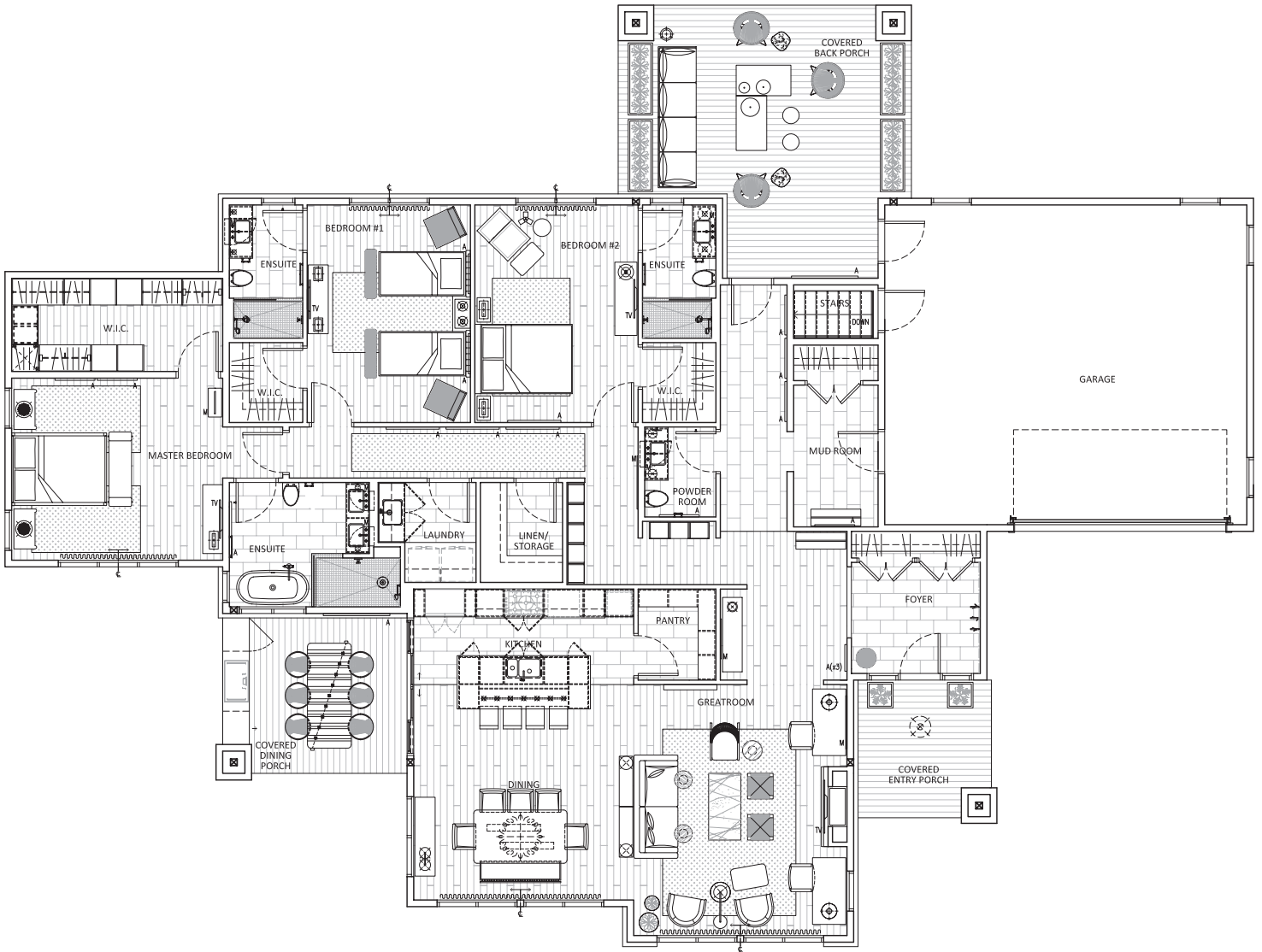
2-CAR  
GARAGE

This exquisite 3-bedroom, 4-bathroom luxury home redefines one-level living. Bright, airy, and open concept, there is over 3,000 square feet of space for entertaining, unwinding, and enjoying incredible views of the Northumberland Strait. The home includes a 2-car garage and a spacious greatroom. Each of the large bedrooms features an ensuite and walk-in closet. The eat-in kitchen is equipped

with an elite appliance package and high-end finishes. Buyers have the option to select an interior design scheme to suit their specific taste and style, including all interior layout finishes, furniture (optional), and lighting.

*Harb'r Stone Village*  


# The Beacon House



FOR MORE DETAILS ABOUT HARB'R STONE VILLAGE CONTACT  
**ERIC LUM** AT 902-412-4812 OR [ELUM@FOXHARBR.COM](mailto:ELUM@FOXHARBR.COM)  
[FOXHARBR.COM/HARBR-STONE-VILLAGE](http://FOXHARBR.COM/HARBR-STONE-VILLAGE)

